

\$389,000 - 221 21 Summerwood Drive, Sherwood Park

MLS® #E4443518

\$389,000

3 Bedroom, 2.50 Bathroom, 1,448 sqft
Condo / Townhouse on 0.00 Acres

Summerwood, Sherwood Park, AB

STAND-ALONE CONDO WITH DOUBLE ATTACHED GARAGE.! With no neighbors attached. 3 BEDROOMS 3 BATHROOMS. Open main floor concept with gas corner fireplace. Upstairs features 3 bedrooms with an open den, large master with a 4 piece bath en-suite, another 2 bedrooms and another 4 piece bath room. Full basement.

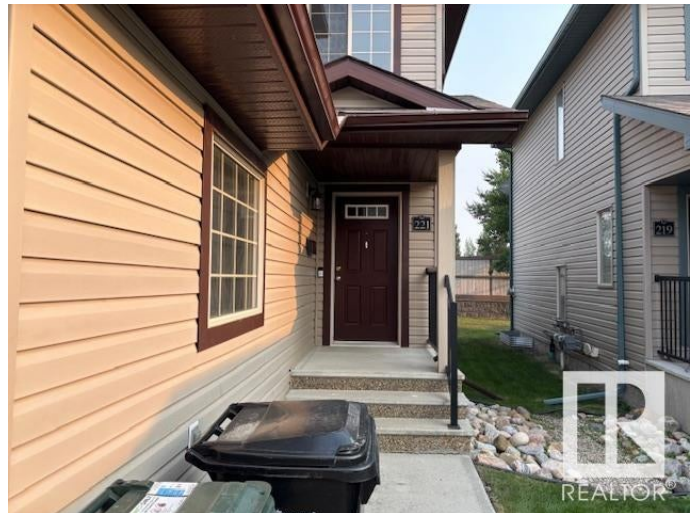
Built in 2007

Essential Information

MLS® #	E4443518
Price	\$389,000
Bedrooms	3
Bathrooms	2.50
Full Baths	2
Half Baths	1
Square Footage	1,448
Acres	0.00
Year Built	2007
Type	Condo / Townhouse
Sub-Type	Detached Condominium
Style	2 Storey
Status	Active

Community Information

Address 221 21 Summerwood Drive



Area	Sherwood Park
Subdivision	Summerwood
City	Sherwood Park
County	ALBERTA
Province	AB
Postal Code	T8H 0B4

Amenities

Amenities	Deck
Parking	Double Garage Attached

Interior

Interior Features	ensuite bathroom
Appliances	Dishwasher-Built-In, Dryer, Microwave Hood Fan, Refrigerator, Stove-Electric, Washer
Heating	Forced Air-1, Natural Gas
Fireplace	Yes
Fireplaces	Corner
Stories	2
Has Basement	Yes
Basement	Full, Unfinished

Exterior

Exterior	Wood, Vinyl
Exterior Features	Cul-De-Sac, Golf Nearby
Roof	Asphalt Shingles
Construction	Wood, Vinyl
Foundation	Concrete Perimeter

Additional Information

Date Listed	June 20th, 2025
Days on Market	12
Zoning	Zone 25
Condo Fee	\$360

DATA IS DEEMED RELIABLE BUT IS NOT GUARANTEED ACCURATE BY THE REALTORS® ASSOCIATION OF EDMONTON. COPYRIGHT 2025 BY THE REALTORS® ASSOCIATION OF EDMONTON. ALL RIGHTS RESERVED. Trademarks are owned or controlled by the Canadian Real Estate Association (CREA) and identify real estate professionals who are members of CREA (REALTOR®, REALTORS®) and/or the quality of services they provide (MLS®, Multiple Listing Service®)

Listing information last updated on July 2nd, 2025 at 12:17am MDT